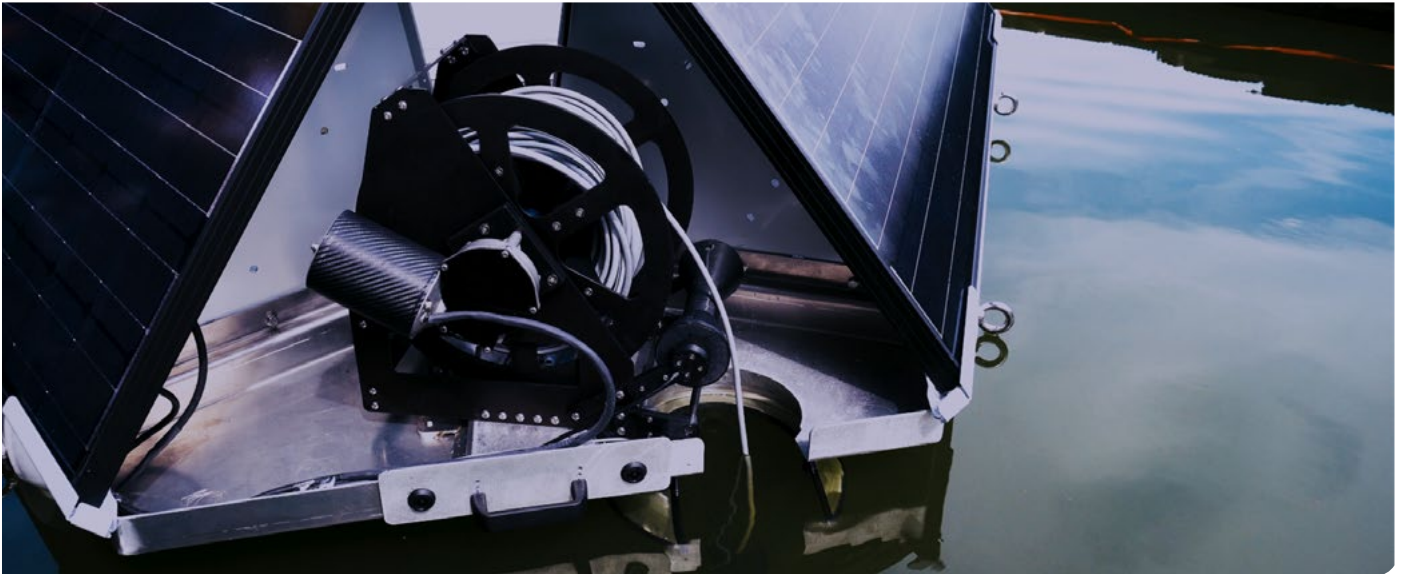


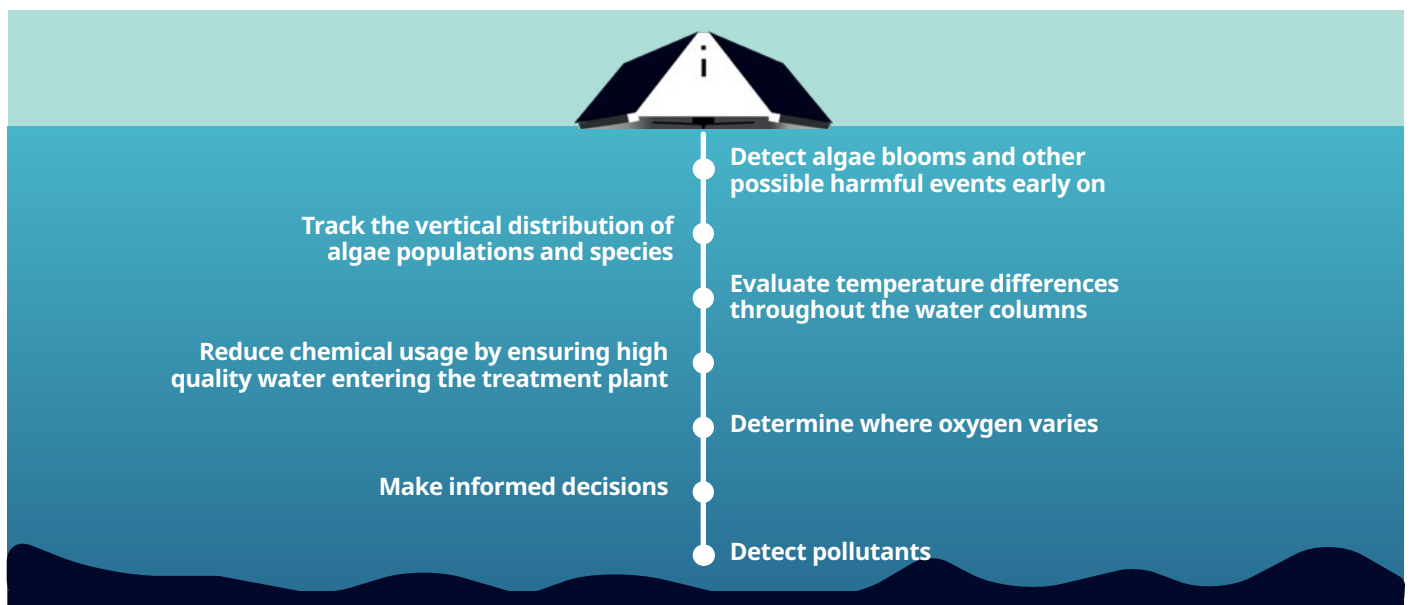
# Introducing LG Sonic Vertical Profiling System



The most accurate and cost-efficient way to measure the entire water column is by collecting various water parameters at pre-programmed depths. Our automated Vertical Profiling System saves time and money on monitoring and responding. The Profiler can be pre-set to take samples from a wide range of depths within a water body and measure key water parameters in real-time. Data is transmitted through 4G, radio or satellite to the MPC-View online software.

- ✔ Its compact design allows for safe and easy maintenance. This can be done directly from the boat, without bringing it back to the shore.
- ✔ Modular design: can be built and installed without crane or large equipment.
- ✔ Possible measure up to 100 m in depth. Our experts will assist you with your specific needs.
- ✔ Can be upgraded with ultrasonic transmitters to treat algae blooms.
- ✔ 50% more affordable than other Vertical Profilers on the market.

## Why Do You Need Vertical Profiling?



# Advantages Of Our Vertical Profiling System

Every LG Sonic Vertical Profiling System has a rugged design, built to work in the long term for effective and reliable water resource management.

## 1 Easy maintenance

Can be done in the water, directly from the boat. No need to step onto the Profiler or bring it back to the shore.



## 2 50% more affordable

compared to other profiling systems on the market.

## 3 Cutting-edge technology

advanced system built with the highest quality material.

## 4 Durable design

resistant to extreme weather conditions and temperatures.

## 5 Noncorrosive mechanism

does not deteriorate easily, ensuring continuous monitoring.

## 6 SCADA integration

Collects data in real-time and delivers it to a user-friendly online software. You can access this at anytime, from anywhere in the world.

## 7 Modular design

Can be upgraded with ultrasound treatment and/or weather station.

### Vertical Profiler video

Scan the QR code with your smartphone to learn more about our new product



# Vertical Profiling Specifications

Minimum profile depth	30 cm (1 ft)
Maximum profile depth	100 m (230 ft)
Weight	12 kg (26.5 lb)
Warranty	2 years

# Control Algae in Large Fresh Water Surfaces



## Designed for large water bodies

- ✔ Raw / industrial / irrigation reservoirs
- ✔ Lakes
- ✔ Dams
- ✔ Cooling ponds and towers
- ✔ Aquaculture ponds
- ✔ Wastewater treatment plants
- ✔ Power plants
- ✔ Settling ponds
- ✔ Crystal- and wastewater lagoons

## Monitors key algae and water parameters in real-time

- ✔ NH<sub>4</sub> (ammonium)
- ✔ Chlorophyll a
- ✔ Phycocyanin
- ✔ Turbidity
- ✔ COD (chemical oxygen demand)
- ✔ DO (dissolved oxygen)
- ✔ Redox
- ✔ Temperature

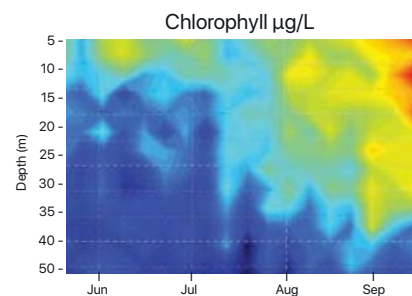
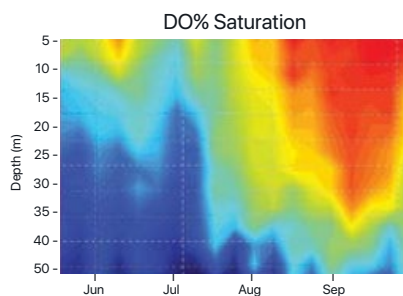
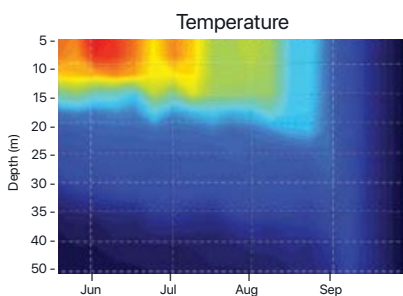
# The MPC-View: Real-time Water Quality Monitoring

MPC-View is an advanced web-based software. The software allows to generate a complete overview of the water quality of one or multiple water bodies.

- ✔ Real-time insight in the water quality
- ✔ Data transfer through radio, GPRS, 3G
- ✔ Ultrasonic program changes based on received water quality data



## Insights into the Water Quality



- ✔ The software receives, summarizes, and publishes data into charts, tables, and spreadsheets on your personal webpage
- ✔ Allows users to follow the progress of the algae treatment and the status of the units
- ✔ Based on the data, ecologists, biologists and technicians from LG Sonic modify the ultrasonic program for effective treatment
- ✔ Set alarms for changing water conditions and maintenance activities

User-friendly software to real-time monitor the water quality



For over a decade, we've invested in research and development and have become leaders in water resource management. Our data-driven technological solutions help water managers save time and money, while guaranteeing the highest water quality.

Yousef Yousef  
CEO LG Sonic

# What Other Products Do You Need?

## Weather station



LG Sonic Weather Station is a low maintenance unit that enables more accurate algal bloom predictions by integrating local weather data into the MPC-Buoy and MPC-View software.

- ✔ Real-time weather data
- ✔ Highly customizable
- ✔ Low maintenance

## Additional Water Quality Sensors



Advanced measurements with smart sensors. The sensors will be protected by an appropriate casing. The sensors are equipped with a wiper mechanism for automatic cleaning after each reading, keeping the maintenance to a minimum.

- ✔ Sensor measurements can be turned on/off
- ✔ Accurately measure wind speed and direction
- ✔ Optical rain gauge senses the size and number of drops

[Contact us for more information or customizable packages](#)

# Company Profile

## Mission

LG Sonic looks beyond the treatment plant and deeper into reservoir management. We believe it's critical to treat water directly at the source, before it reaches the water treatment plant. Through our knowledge and technologies, we aim to prove that sustainable, long-term algae control can become a reality. For over 10 years, we have invested in research and development. Today, we are the leaders in our sector.



Visit [LG Sonic online](http://www.lgsonic.com)

Scan the QR code with your smartphone  
to visit the LG Sonic website



**LG Sonic B.V.**  
Heliumstraat 7  
2718 SL  
Zoetermeer  
The Netherlands

T: 0031- 70 77 09030  
F: 0031- 70 77 09039

[www.lgsonic.com](http://www.lgsonic.com)  
[info@lgsonic.com](mailto:info@lgsonic.com)